

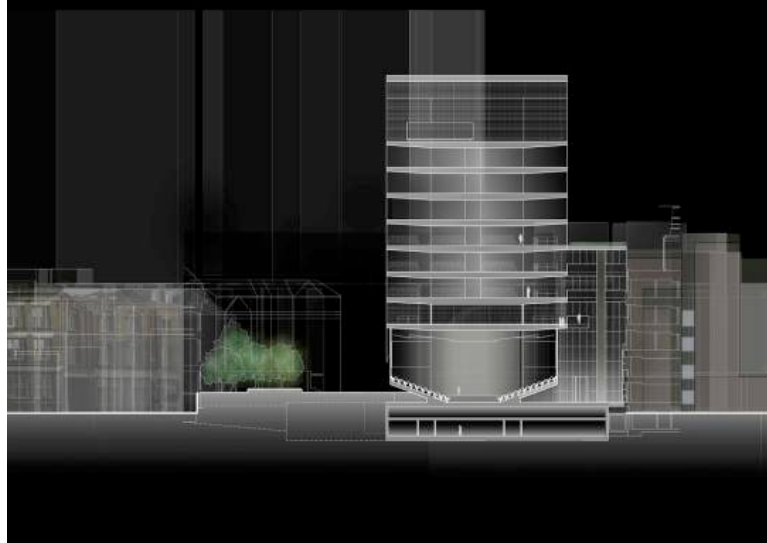
University of Melbourne

Architectural
Design Competition

New Building for the Faculty of
Architecture Building and Planning

Built Pedagogy

The body of our work focuses on buildings as organisms for exploration. Through thoughtful development of rigorous processes of design and analyses, we fine-tune our understanding of space, and specific characteristics of space, to determine how these qualities shape human experience. Rigorous attention to the internal organization that facilitates a dynamic academic culture results in architecture that is coherent, intelligent and animated. Inherent in the design of place, is the intention to preserve the best and to enhance the existing, both natural and built, by maintaining a commitment to the primacy of public space, the glue that holds a community together. Our approach synthesizes creative imagination and rational logic to integrate the functional, contextual, social, environmental and cultural aspects of a project into a unified and clear expression of mission.



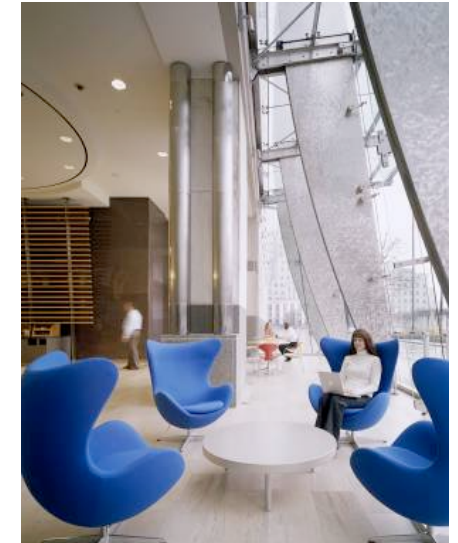
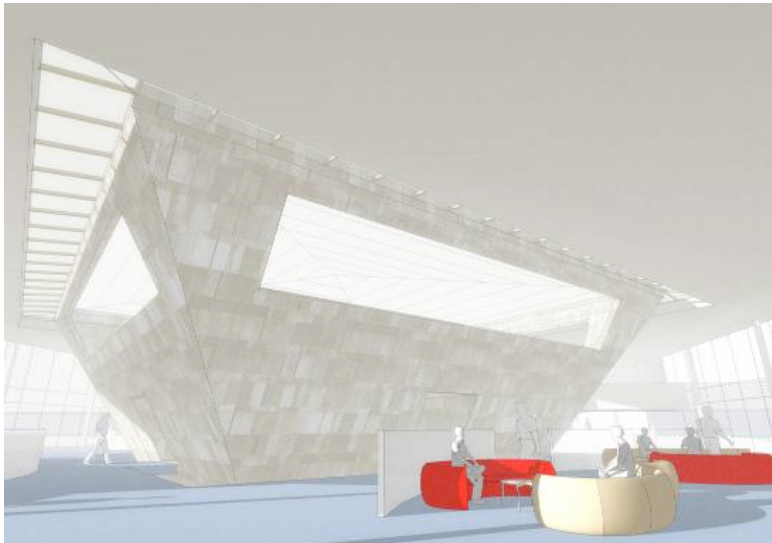
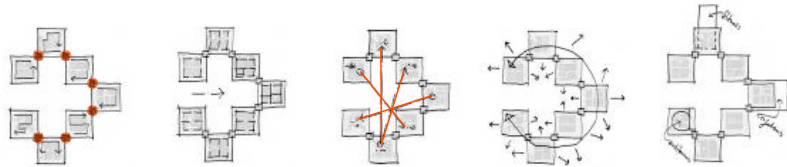
University of Melbourne

Architectural
Design Competition

New Building for the Faculty of
Architecture Building and Planning

The Academic Environment

Through on-going investigation and evaluation, we have developed an evidenced-based approach to design. We observe, quantify and evaluate interior and exterior space in relation to people individually and collectively; how they learn, communicate and create. We explore independent and collaborative activities to determine how the physical environment can support and facilitate the transformation of an idea into discovery. By challenging convention, we uncover innovation and richness to energize fundamental connections; catalysts of original thought. Working within the existing framework of a university's legacy, these links provide the necessary evolution of space without compromising those characteristics that give a university its pride of place. The new academic environment offers space with varying characteristics to accommodate the growing diversity of programs, people and pedagogies that define an expanding academic community.



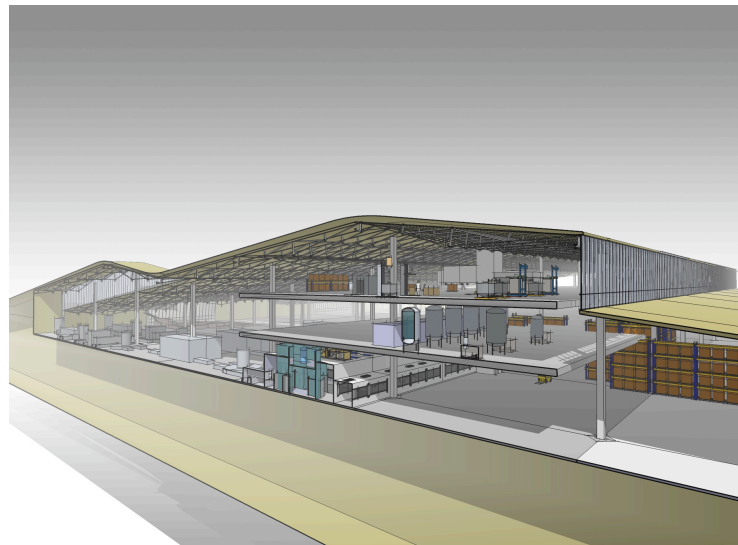
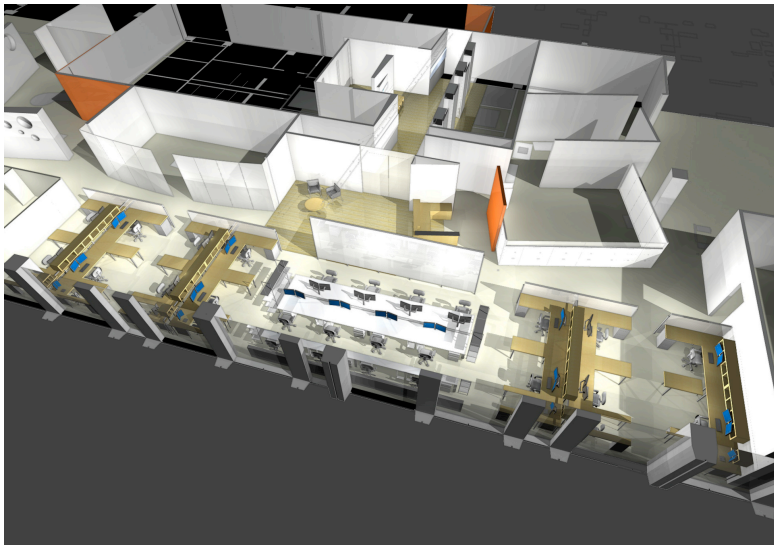
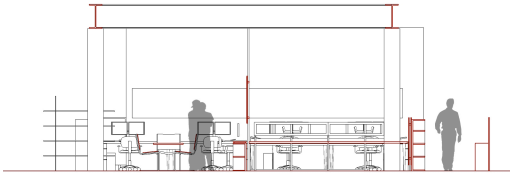
University of Melbourne

Architectural
Design Competition

New Building for the Faculty of
Architecture Building and Planning

The Design Studio

A free exchange of ideas through interaction and collaboration within the rich diversity of an academic community is at the heart of learning; and is essential to a design studio. The proven trend towards problem-based learning fosters student and faculty interaction at all hours of the day, in all types of places. As the lines between academic disciplines blur, so do boundaries between faculty and students, between play and work. The connections that define and facilitate these new relationships are vital. With technology advancing at breakneck speed, the design studio is no longer contained within its physical construct; just as a university is no longer confined to its own sphere of influence. A successful design studio recognizes that engaging new ideas from diverse sources is integral to the evolution of knowledge.

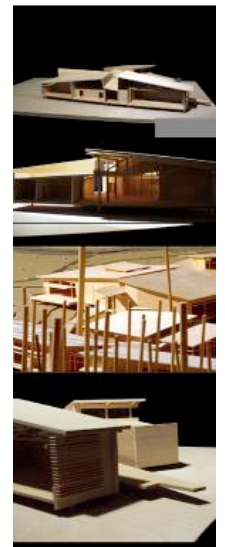
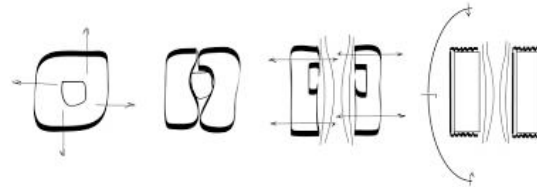
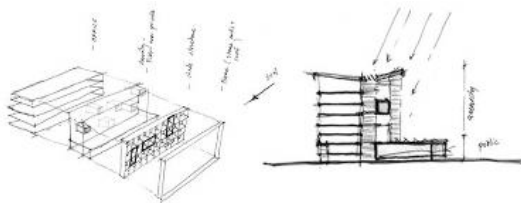


University of Melbourne

Architectural Design Competition | New Building for the Faculty of Architecture Building and Planning

The Living Building

In addition to exploring and implementing innovative approaches to energy efficiency, other criteria, such as flexibility and adaptability, are critical to functional sustainability. We embrace the Architecture 2030 Challenge to reach carbon neutral by the year 2030, and we support Green Star, BREEAM and LEED systems as accepted tools and useful frameworks for discussion. While addressing the highly demanding programmatic, technical and logistical requirements of academic facilities and campuses, we are also mindful of the most fundamental requirement of the living building: to provide great places to teach and to learn; to inspire and to discover.



University of Melbourne

Architectural
Design Competition

New Building for the Faculty of
Architecture Building and Planning

Capability and Process

Vision

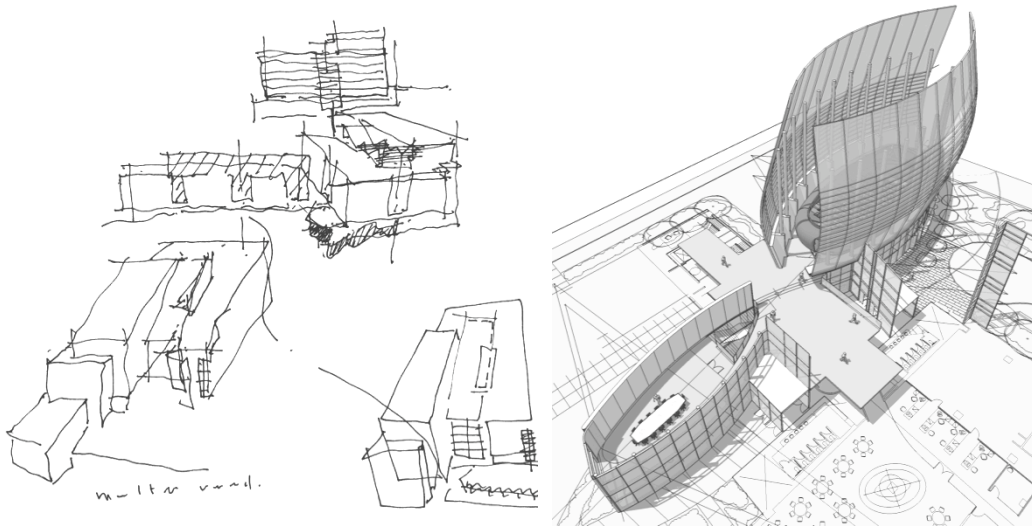
HDR CUH2A has developed a collaborative design process to realize the overarching vision for a project and to help create dynamic facilities that express a university's core values. A fundamental component of our signature design process is visioning. We conduct a well-structured workshop in which we encourage an open and free exchange of ideas. Rather than beginning by defining the physical elements of a project, our visioning process explores tangible and intangible goals from an elevated perspective. Through a process of choice and deduction we elicit illuminating responses to a series of photographic images to best express higher aspirations.

Preview, Review, Endorse

Hierarchically organized, our preview. review. endorse. process continuously facilitates consensus and forward momentum. Instead of reaching a crucial stage only to ask, "But what if we had...?" the university and design team can feel confident that sound decisions have brought the project to the right place at the right time.

Design team

HDR CUH2A has worked on a variety of university campuses across the United States, Europe and in Asia and has designed new facilities and renovations of various scales for numerous urban campuses. In locations where we have not established a significant presence, we team with a local architect to provide optimum service. As a fully-integrated design firm, an appreciation for others' expertise is inherent in our work culture; whether in-house professionals, teaming partners, or consultants. Seamless integration is built on a platform of open and respectful communication, an ongoing activity involving all design disciplines. Synergies created through this ongoing multi-disciplinary exploration often lead to unforeseen efficiencies and innovation. We are committed to a collaborative work culture in which every member of the team is responsible to the success of the project in its entirety.



University of Melbourne

Architectural Design Competition | New Building for the Faculty of Architecture Building and Planning

Awards

Cornell University Veterinary Medicine Diagnostic Center
Merit Award: Unbuilt (AIA NJ)

Dubai Biotechnology & Research Park - Headquarters Complex
Design and Sustainability Honor Award (AIA NJ)

Hixson-Lied Science Building, Creighton University
Omaha, Nebraska
Outstanding Buildings, Post Secondary
Architectural Portfolio
(American School & University Magazine)

Holland Performing Arts Center
Omaha, Nebraska
Citation Award - New Construction Category,
Honorable Mention Award - Details Category
(American Institute of Architects, Nebraska)

Iberian International Nanotechnology Laboratory (I²NL) Braga Fellowship Residences
Portugal
Honor Award - Unbuilt Category (AIA Nebraska)

Iberian International Nanotechnology Laboratory (I²NL) Braga Gateway
Portugal
Honor Award - Unbuilt Category (AIA Nebraska)

Interdisciplinary Science & Technology Building IV (ISTB IV), Arizona State University
Tempe, Arizona
First Place Award - Specific Project Marketing Category

McKinney Green Building
McKinney, Texas
Project of the Year
(Texas Renewable Energy Industries Association)

National Institutes of Health - Biomedical Building 33 Complex
Design Citation Award (AIA MD)

Nebraska Methodist College - The Josie Harper Campus
Omaha, Nebraska
Interior Design Excellence, Outstanding Projects - Common Areas
(American School & University Magazine)

Orpheum Theater
Omaha, Nebraska
2004 Citation Award -
(American Institute of Architects, Nebraska)

University of California at Riverside Library for the Sciences
Riverside, California
Outstanding Building in the Libraries/Media Centers Category
(American School & University Magazine -2000 Education Interiors Showcase)

U.S. Department of Energy - Pacific Northwest National Laboratories
Design and Sustainability Merit Award (AIA NJ)

USAMRIID National Interagency Biodefense Campus
Merit Award: Unbuilt (AIA NJ)

Merit

Recent Publications

Haverford College Integrated Natural Science Center
ASHRAE Journal 2008

Design for High-Tech Success
by Joseph W. Zawistowski
New Jersey Biotechnology Life Sciences Coalition Inc.
2008

Center for Research and Technology Facts
PMUSA 2008 "DuBiotech Facilities to Go Green"
Property Weekly 2008

Office Space: Who Needs It?
by John Mudgett 2008

www.hdrjuh2a.com

